

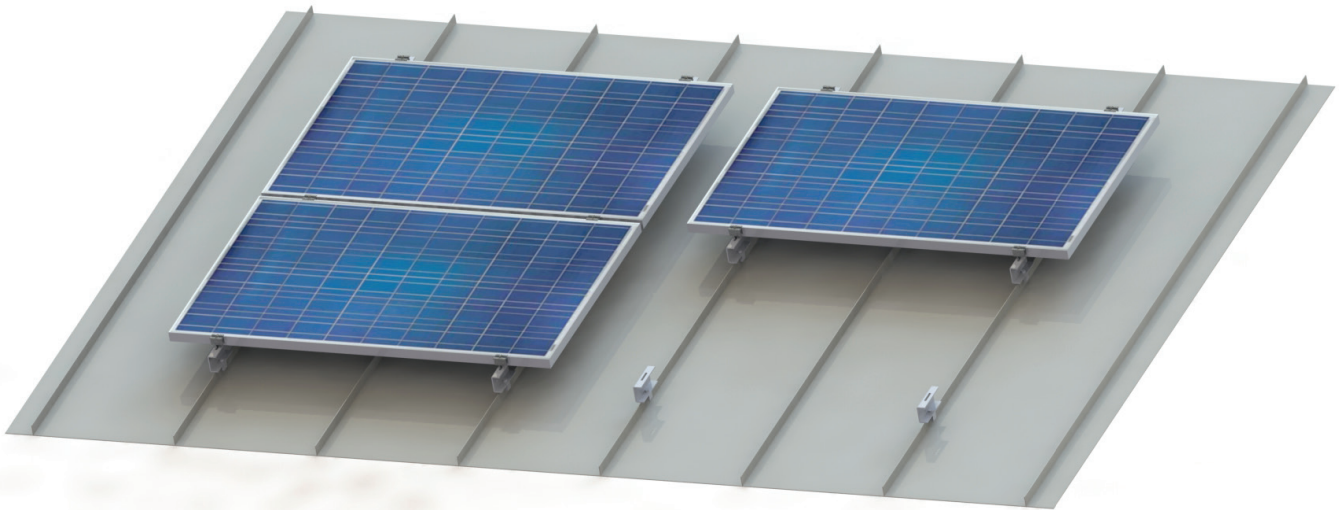
SEAMRACK RL

Standing Seam Mounting System

LOW COST - NON PENETRATING - EASY TO INSTALL

SEAMRACK RL is the innovative, non-penetrating PV mounting system designed for standing seam metal roofs. The system's superior, rail-less design uses specialized mounting clamps to secure solar modules directly to any standard seam without jeopardizing the integrity of the roof.

SEAMRACK RL's mounting solution is both modular and low profile, while still allowing for thorough ventilation and optimal peak performance. The system's installation is fast and straightforward due to its simple, rail-less design and few components.

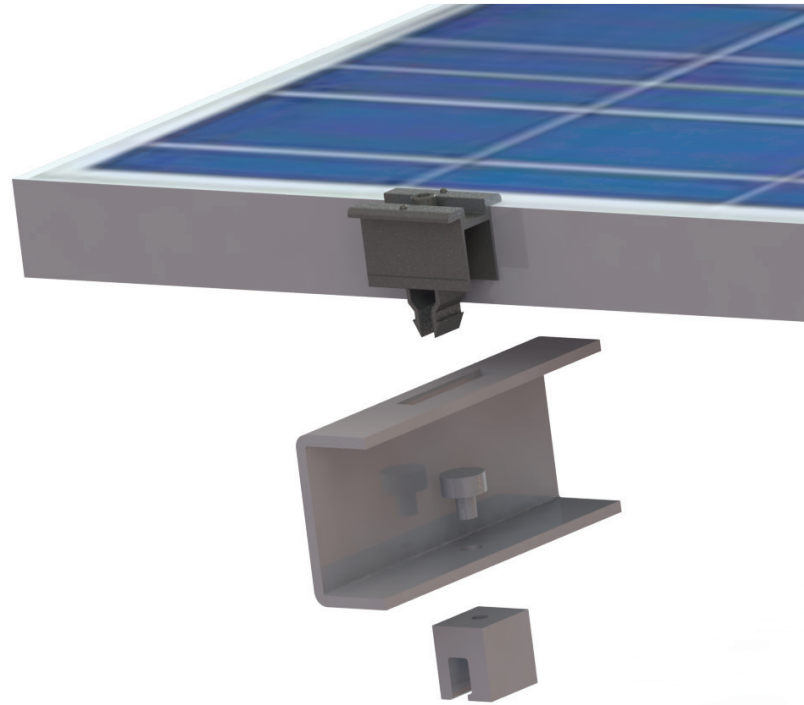


FEATURES

- Non-penetrating clamps maintain your roof's warranty
- Few components for fast installation and competitive pricing
- Quality aluminum and stainless steel parts for long lasting performance
- Easy panel mounting with click-in module clamps
- Custom fit clamps available for various standing seam profiles
- 10-year standard product warranty

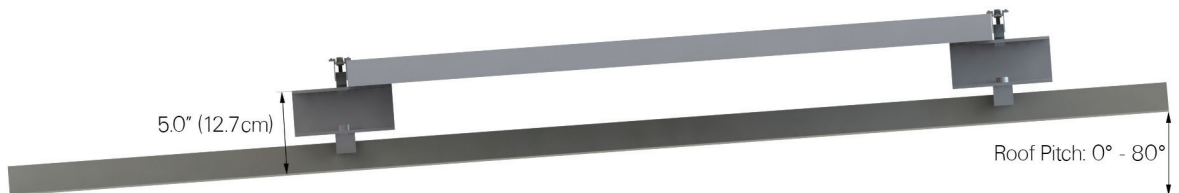
SEAMRACK RL

Standing Seam Mounting System



TECHNICAL SPECIFICATIONS

Distribution Load	2 - 3 lbs/ft ² dead load
Wind Speed	Up to 120 mph for Exposure C
Module	All standard framed PV modules
Grounding Method	ETL certified grounding clamps
Orientation	Landscape and portrait
Roof Type	All types of standing seam metal roofs
Roof Pitch	0° - 80°
Material	High-grade aluminum and stainless steel



MADE IN AMERICA



MADE IN CANADA